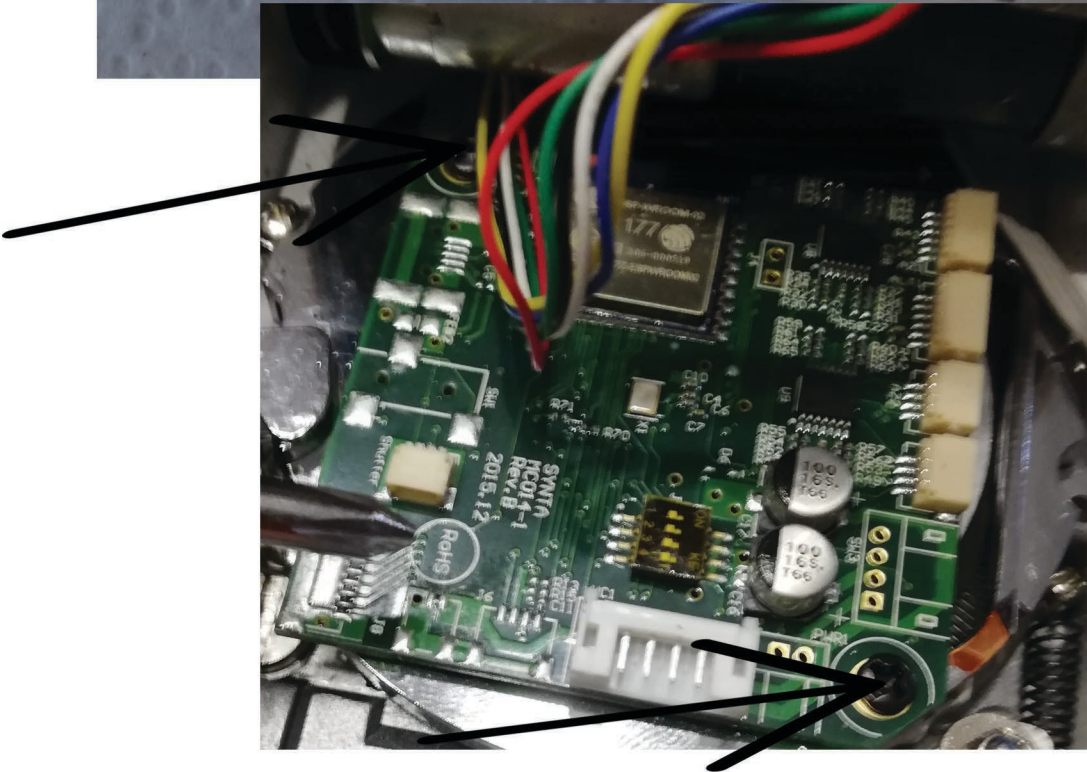


# SKYWATCHER AZ-GTI DISSASSEMBLY

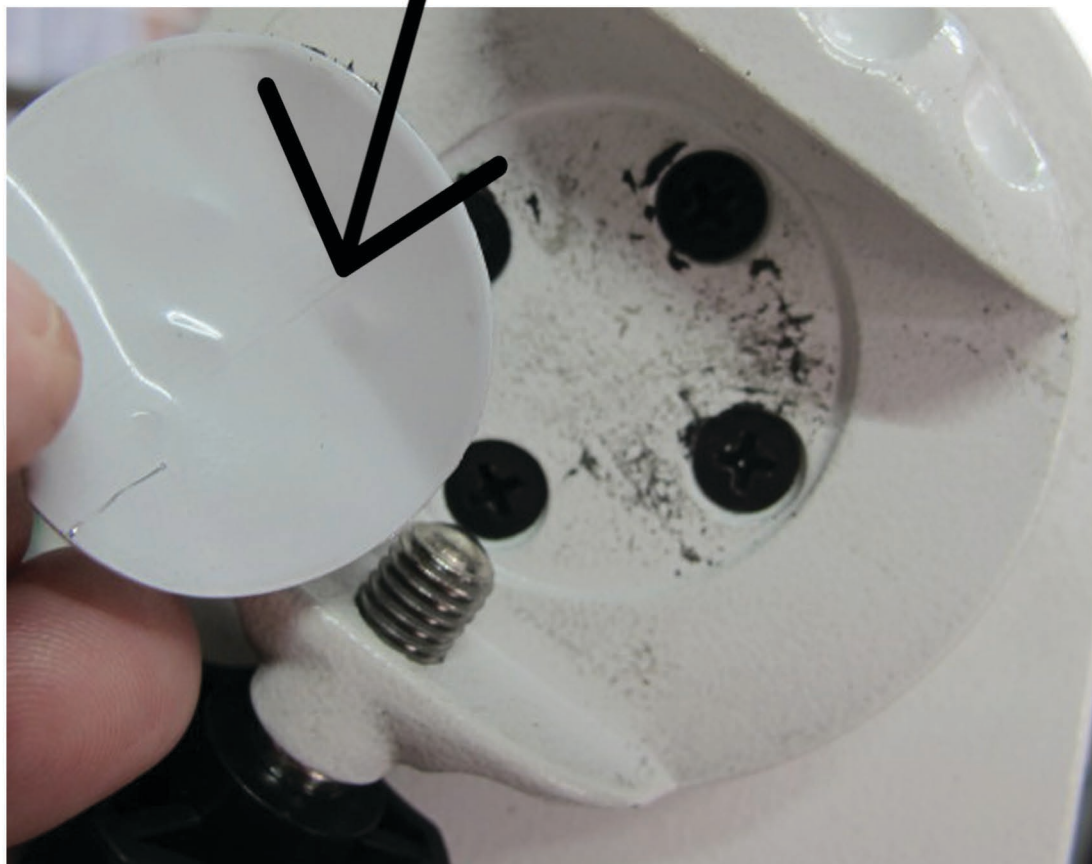


**THIS IS AN UNOFFICIAL GUIDE WRITTEN BY DIMITRIS K. THIS GUIDE IS FOR EDUCATIONAL PURPOSES ONLY. IF YOU WANT TO PROCEED DO IT WITH YOUR OWN RISK!!**

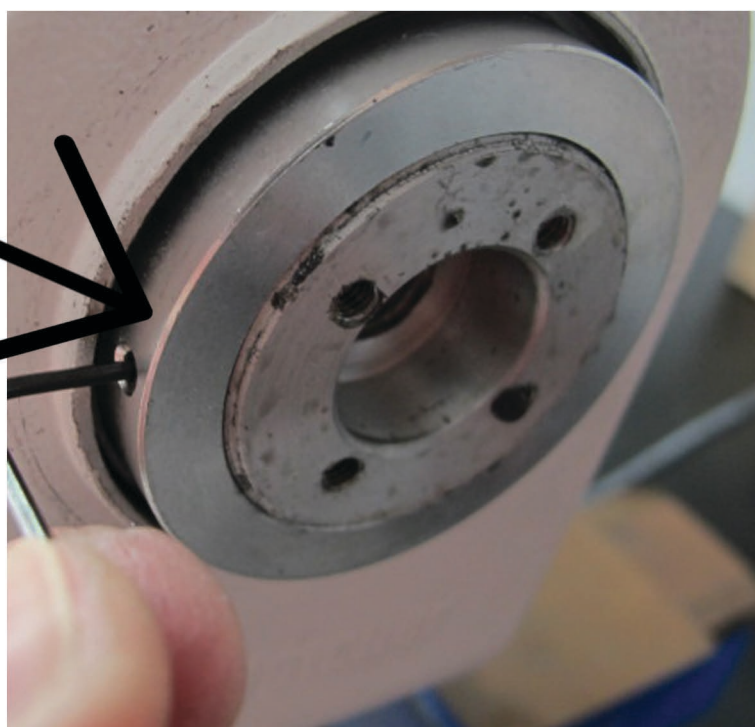
Remove the motherboard, remember cable order



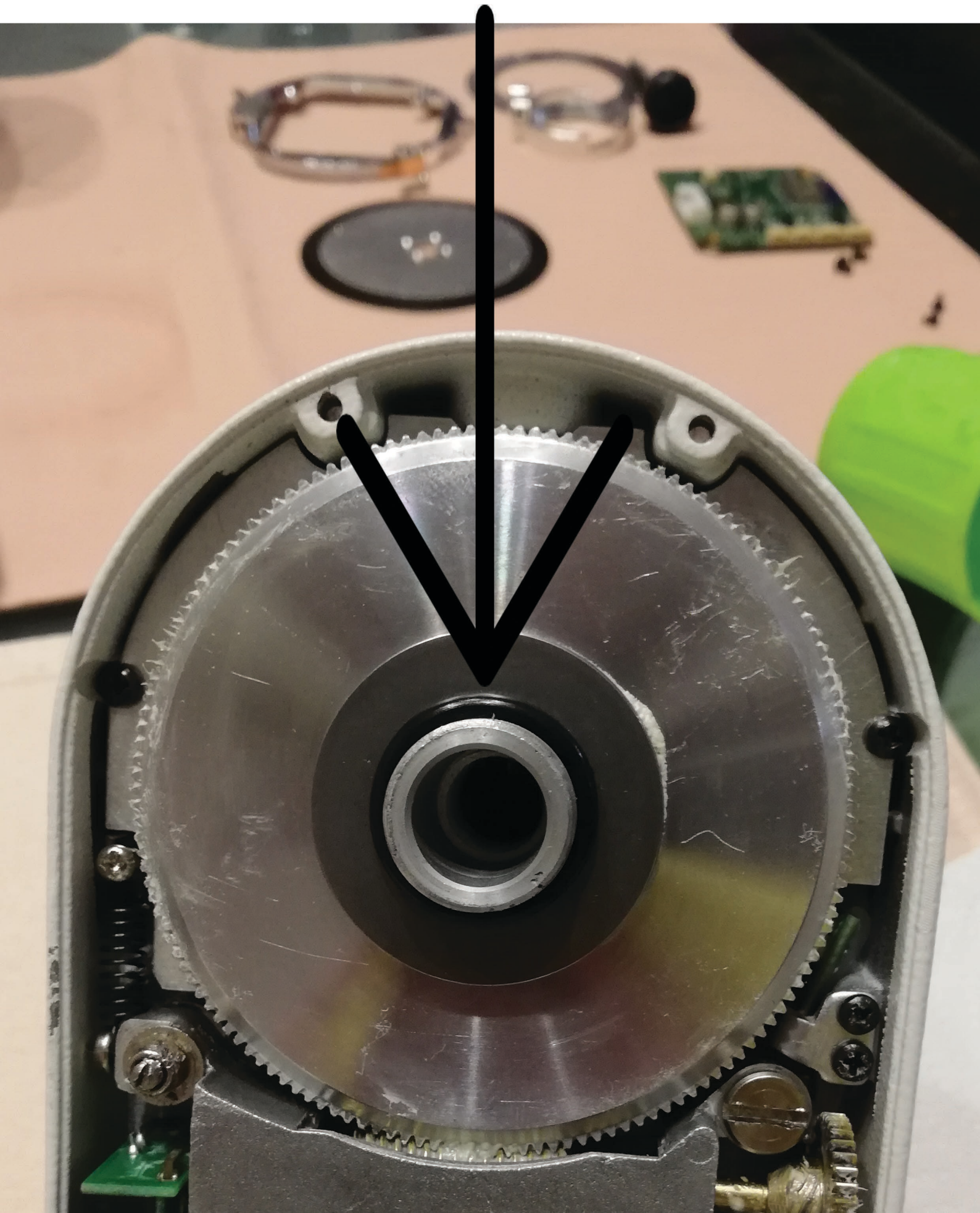
Carefully remove cover with a knife (it's glued so proceed slowly and be patient in you want it unglued!)



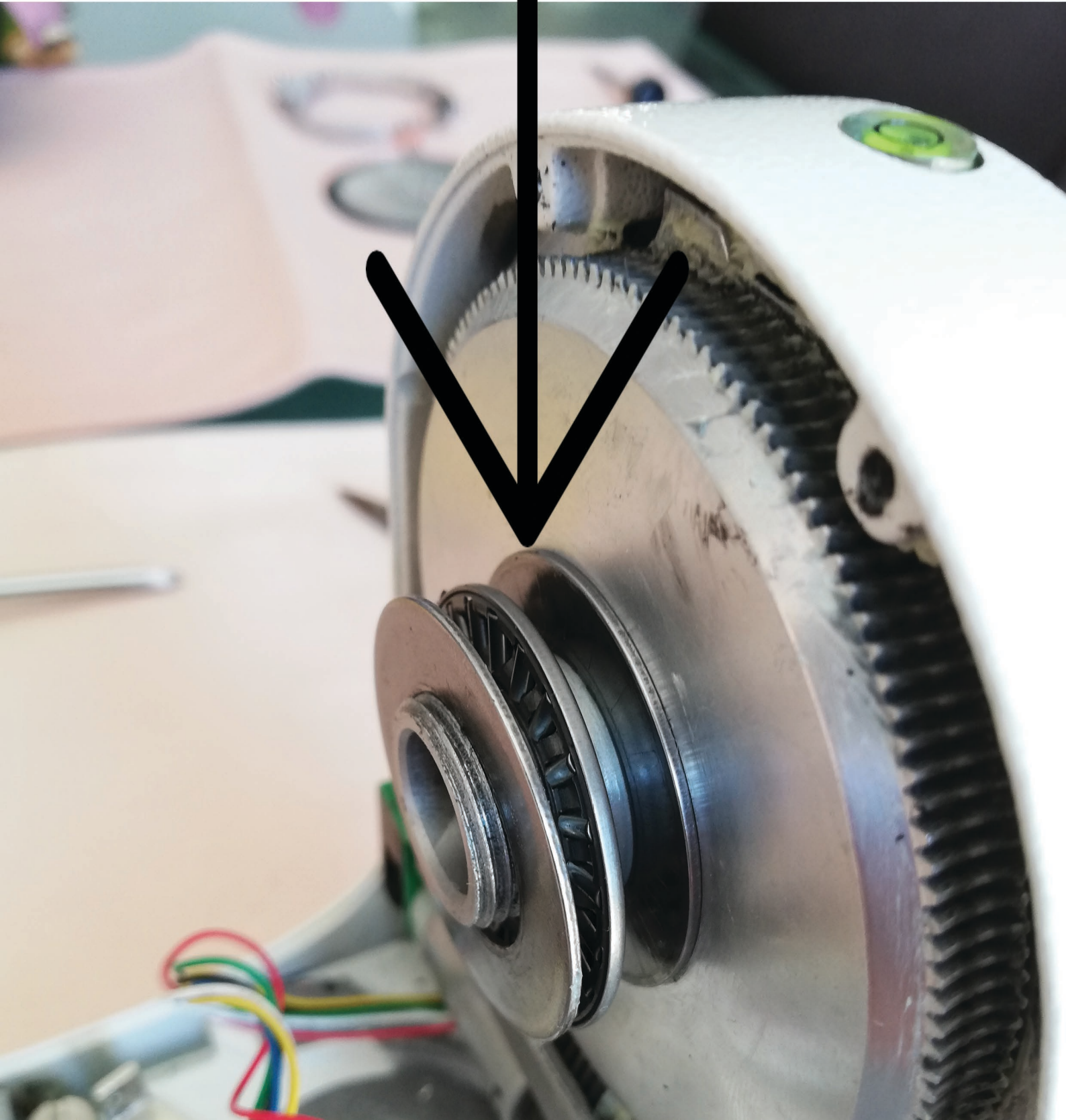
Remove tension collar by unscrew the two tiny allen screws and untight the collar by hand



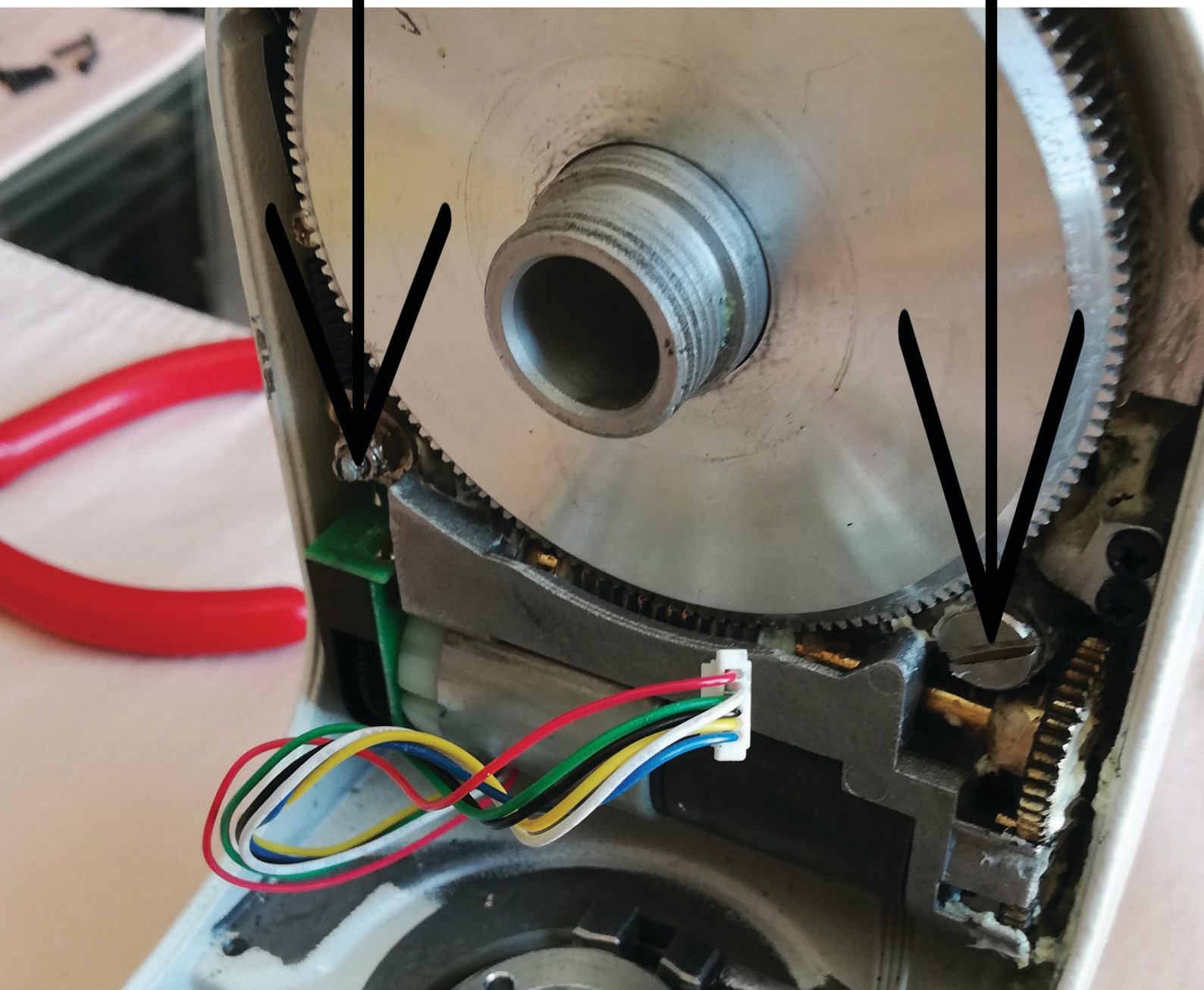
Carefully Remove o'ring with a knife  
of flat screwdriver



Remember the order!!



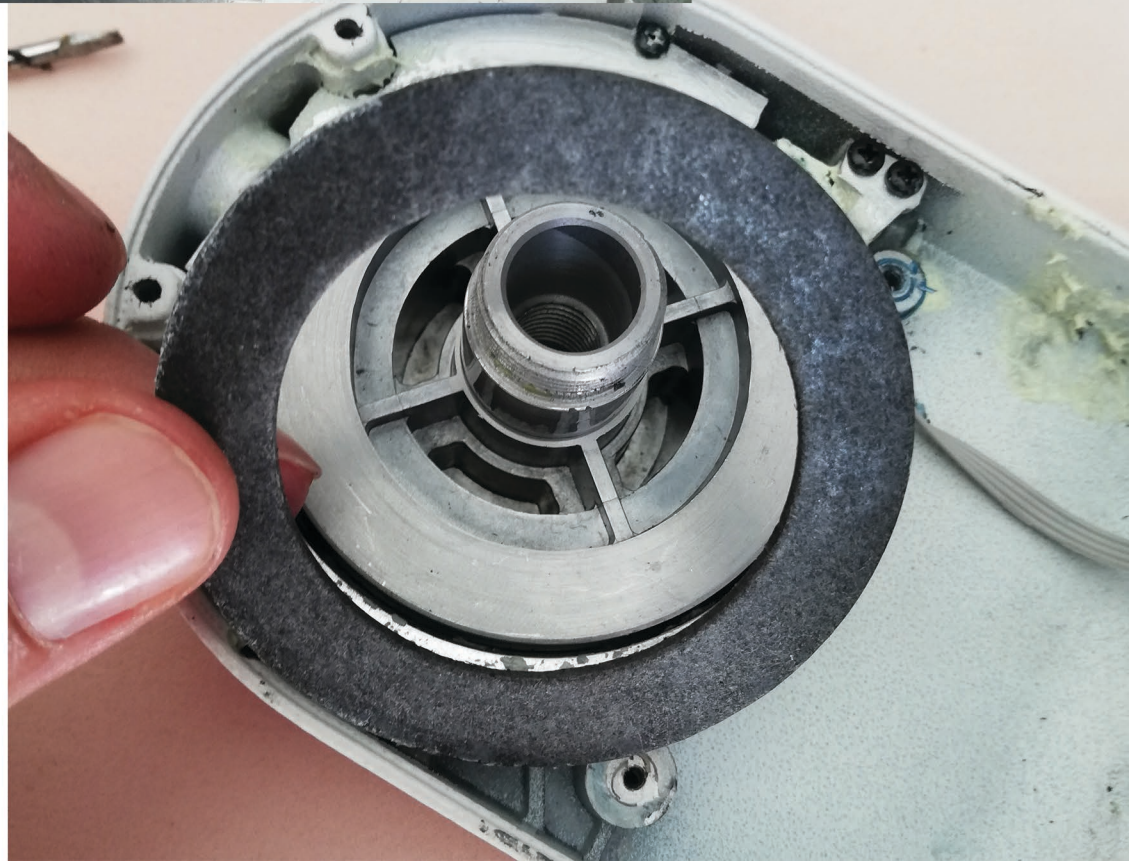
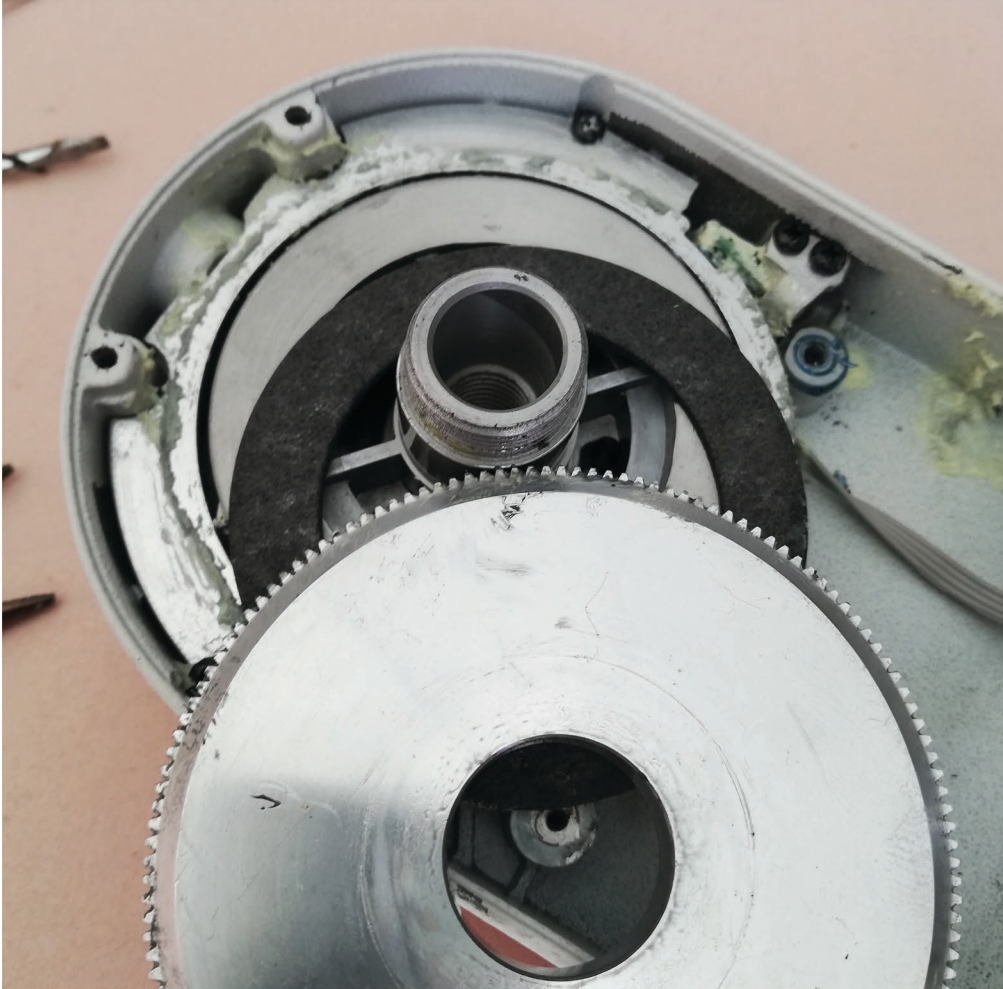
To remove the motor, untight there and there



Remove the gear!



Remember the order!!

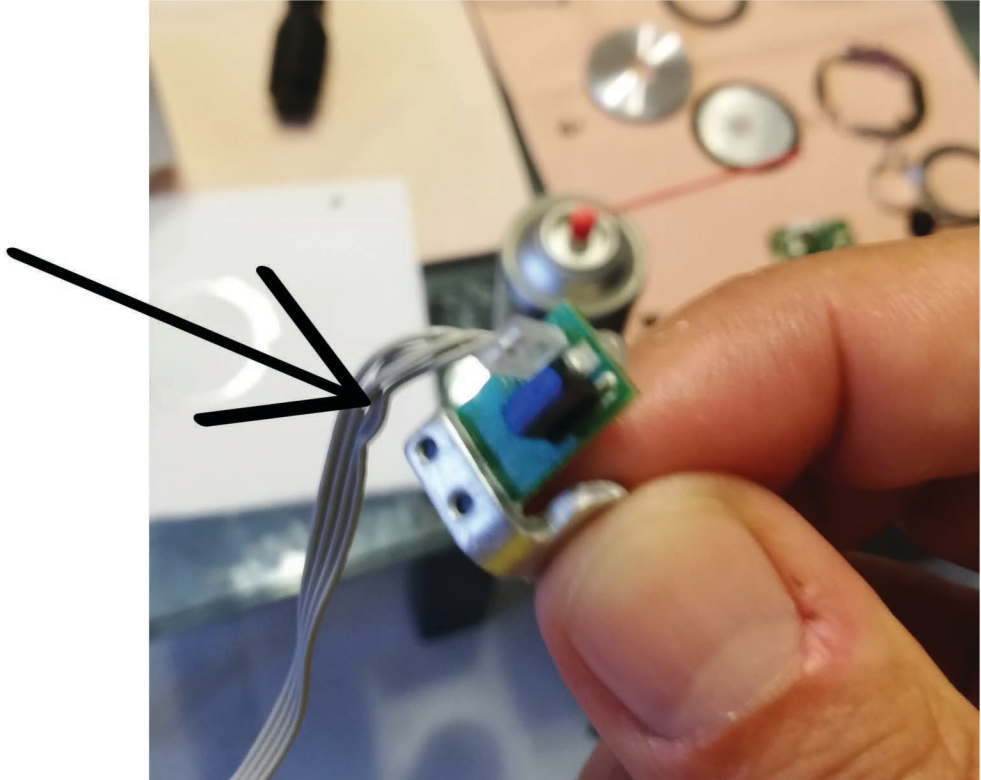




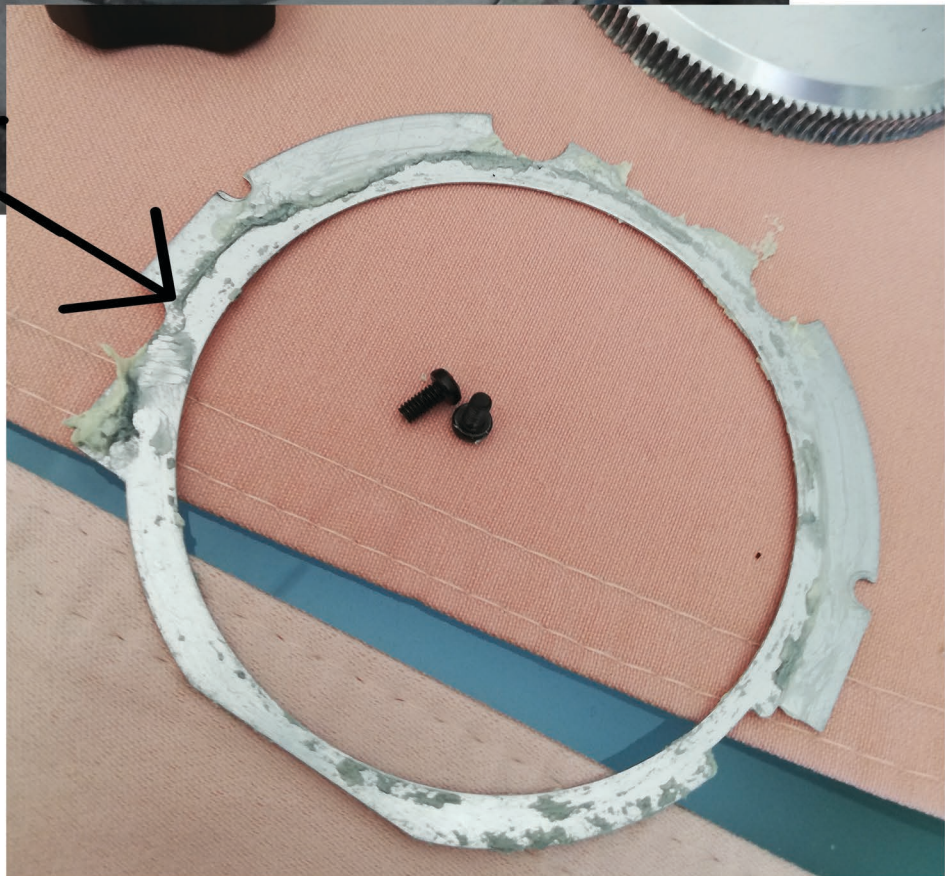
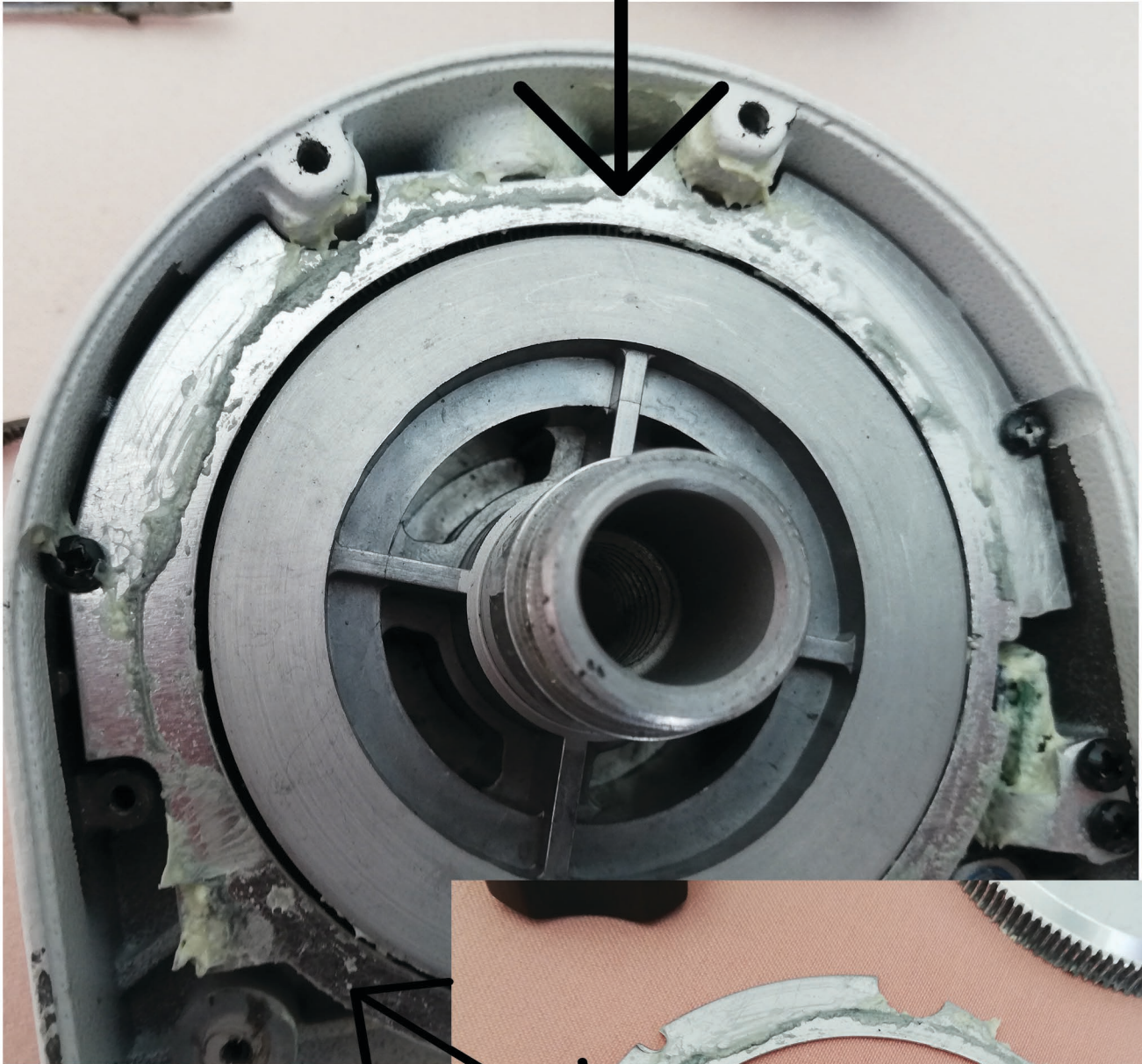


Remove the encoder!

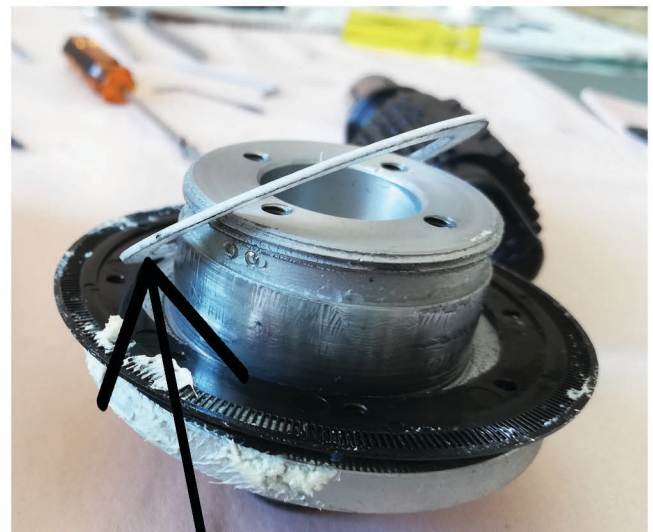
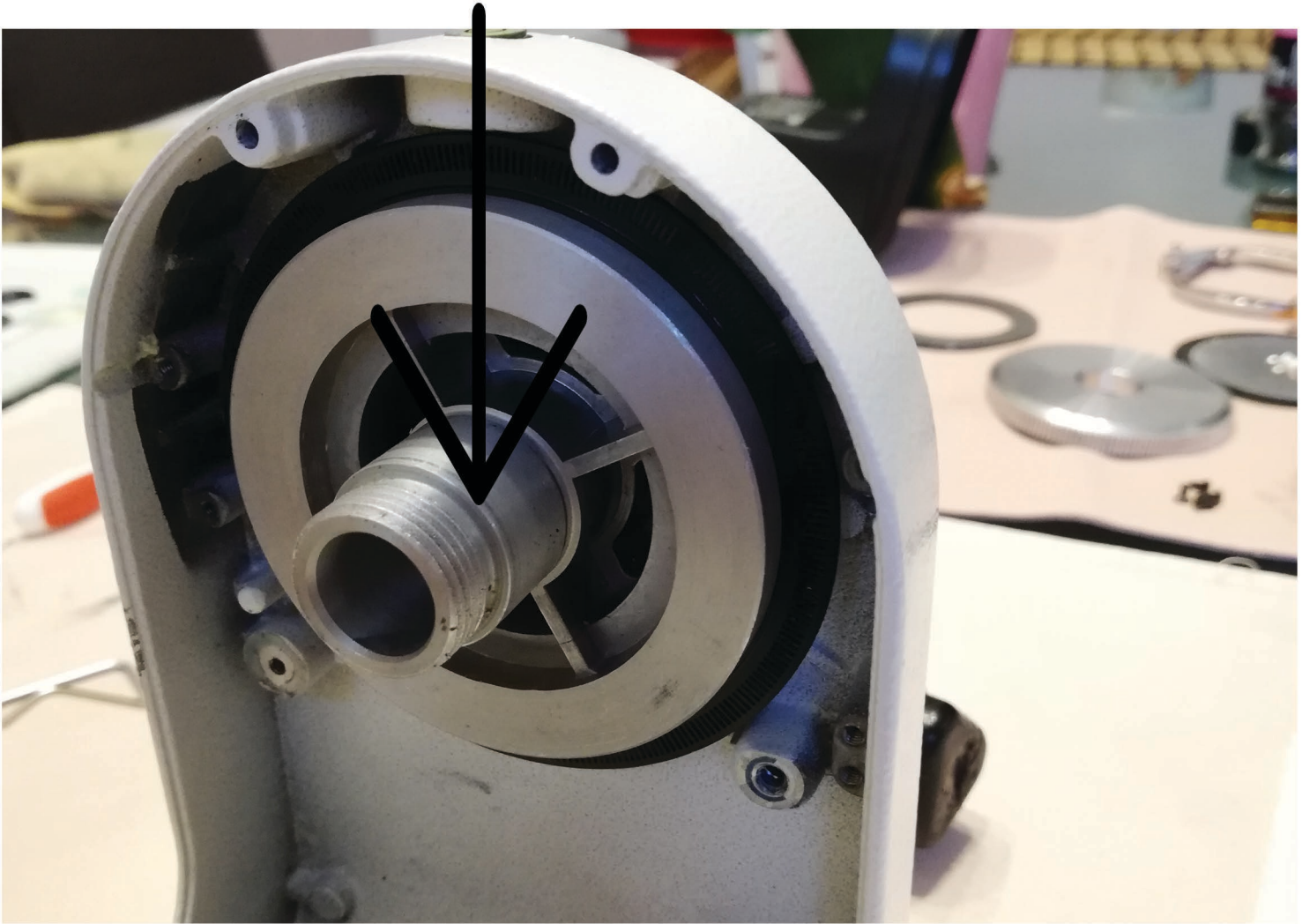
Encoder detail



Remove the collar



Press to remove the ALT mechanism

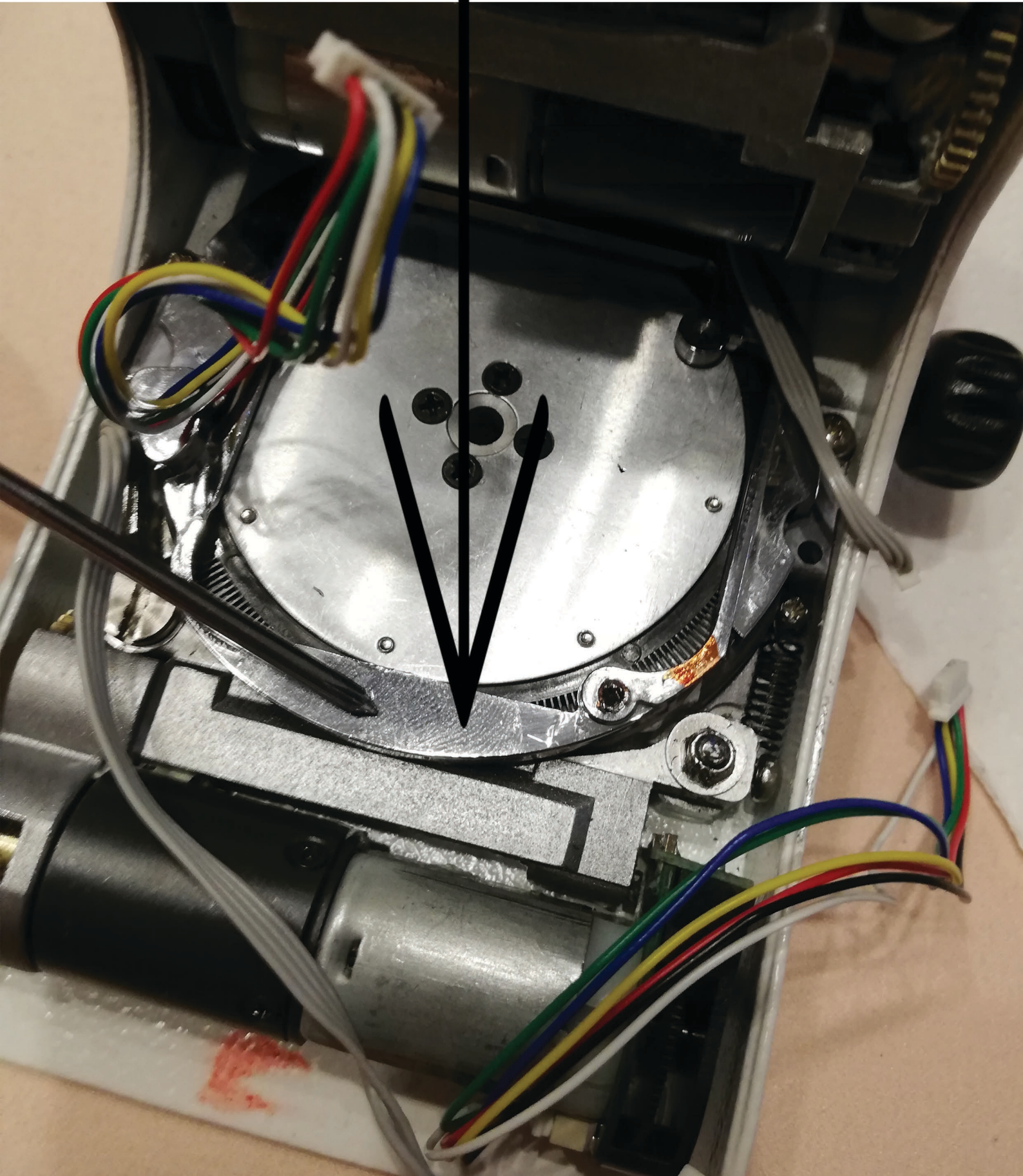


Remember!

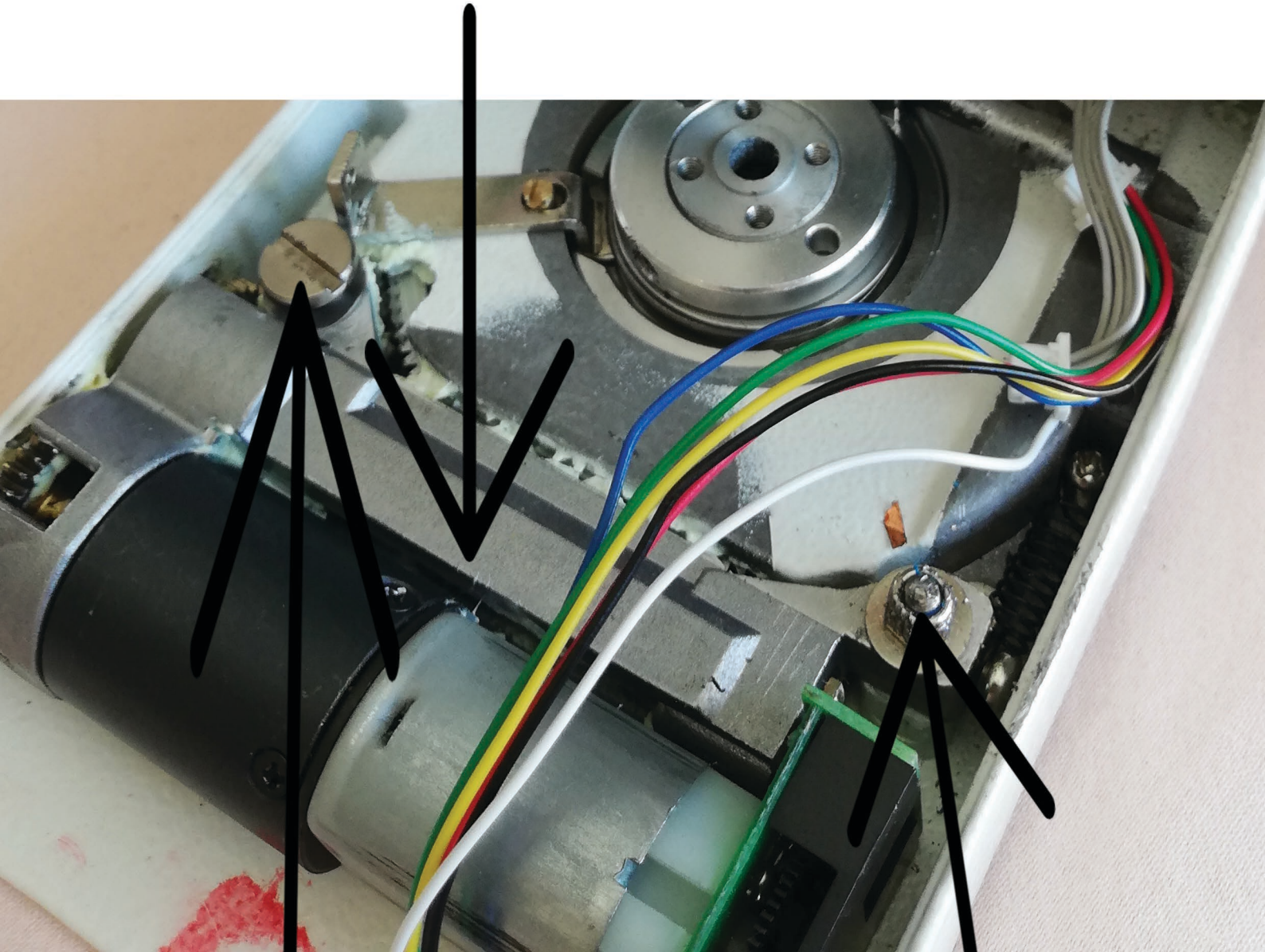
Careful not to lose



Remove the collar-motherboard base



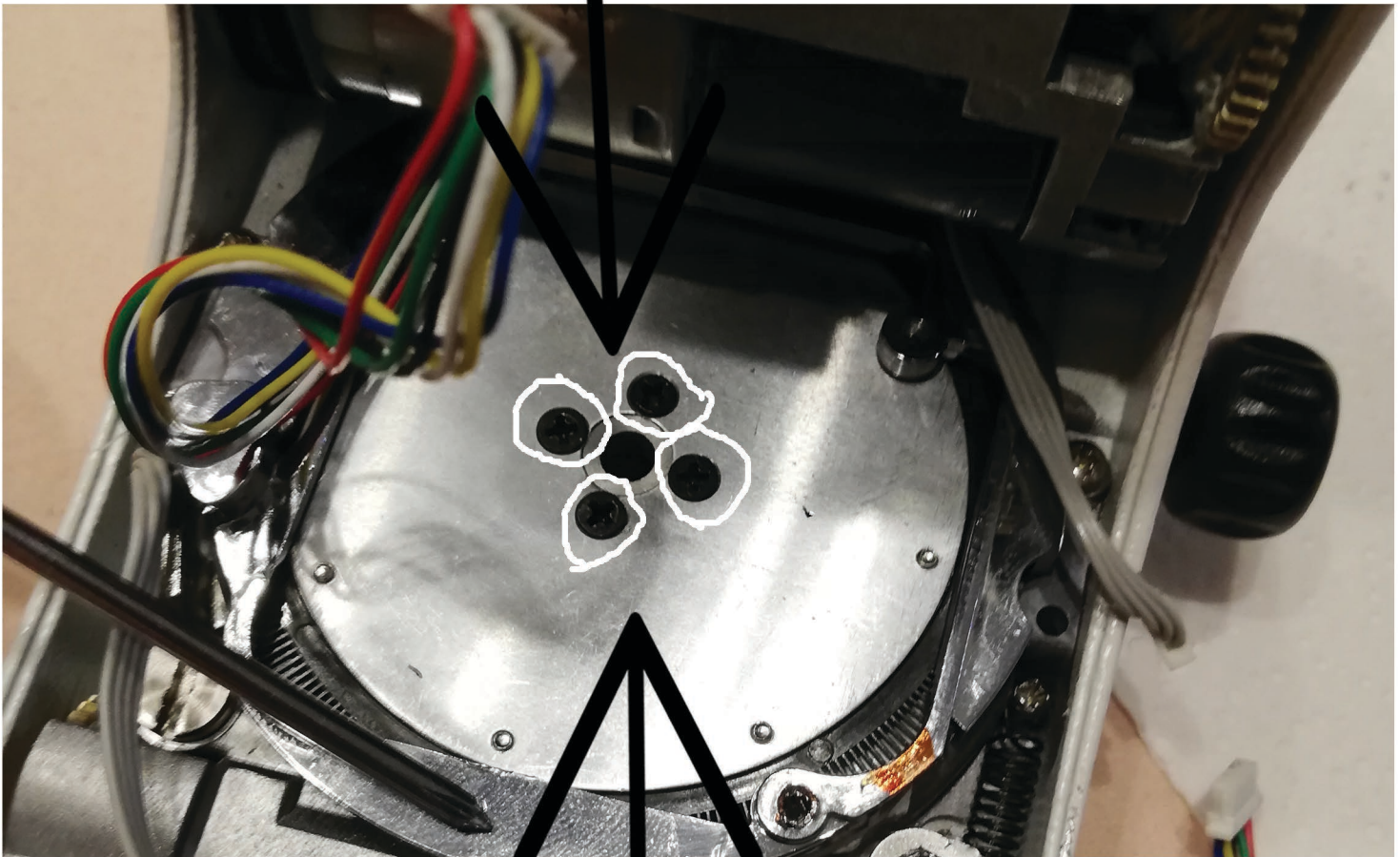
Remove the motor



Unscrew

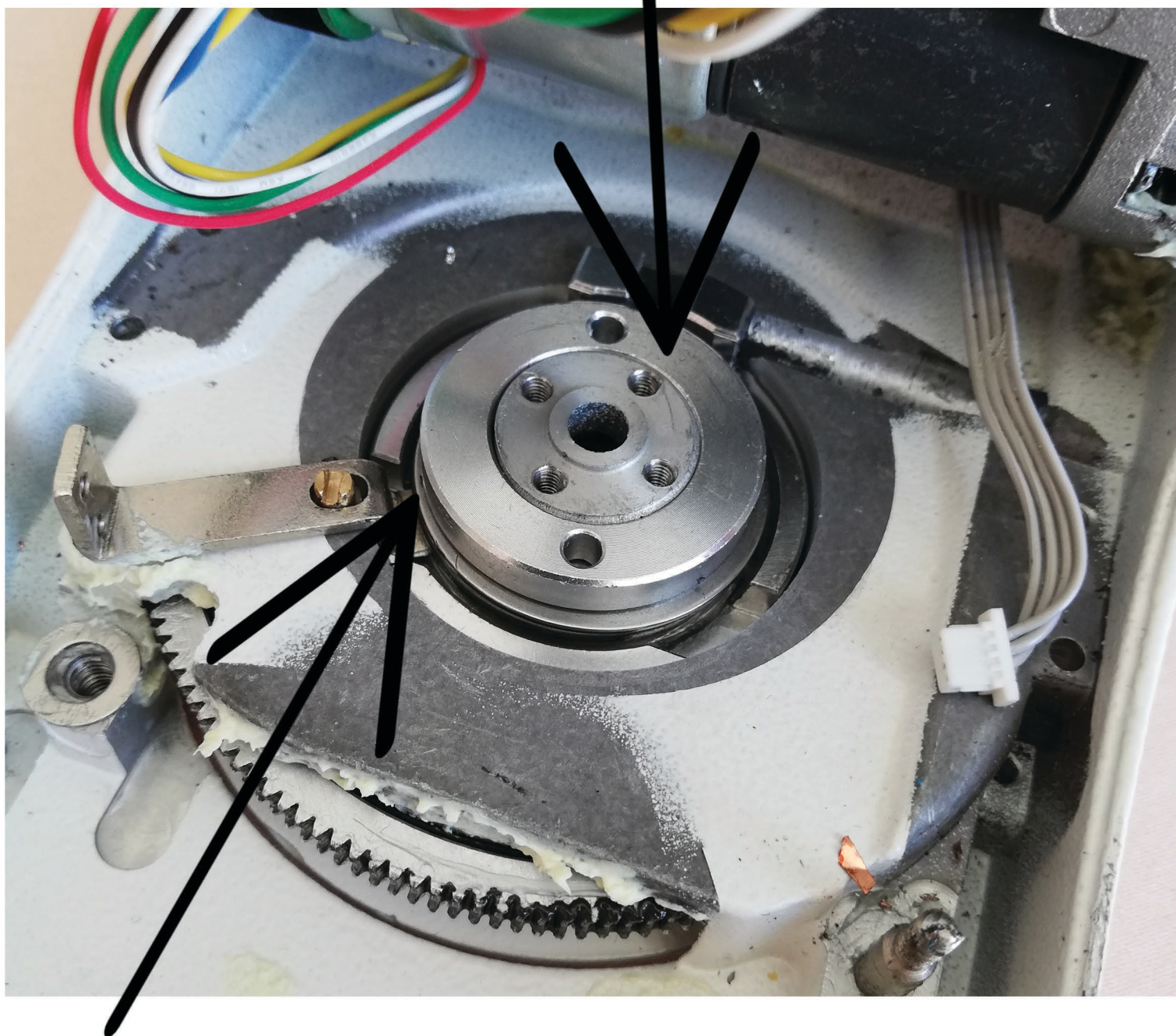
Unscrew

Remove gear with the encoder wheel



Unskrew

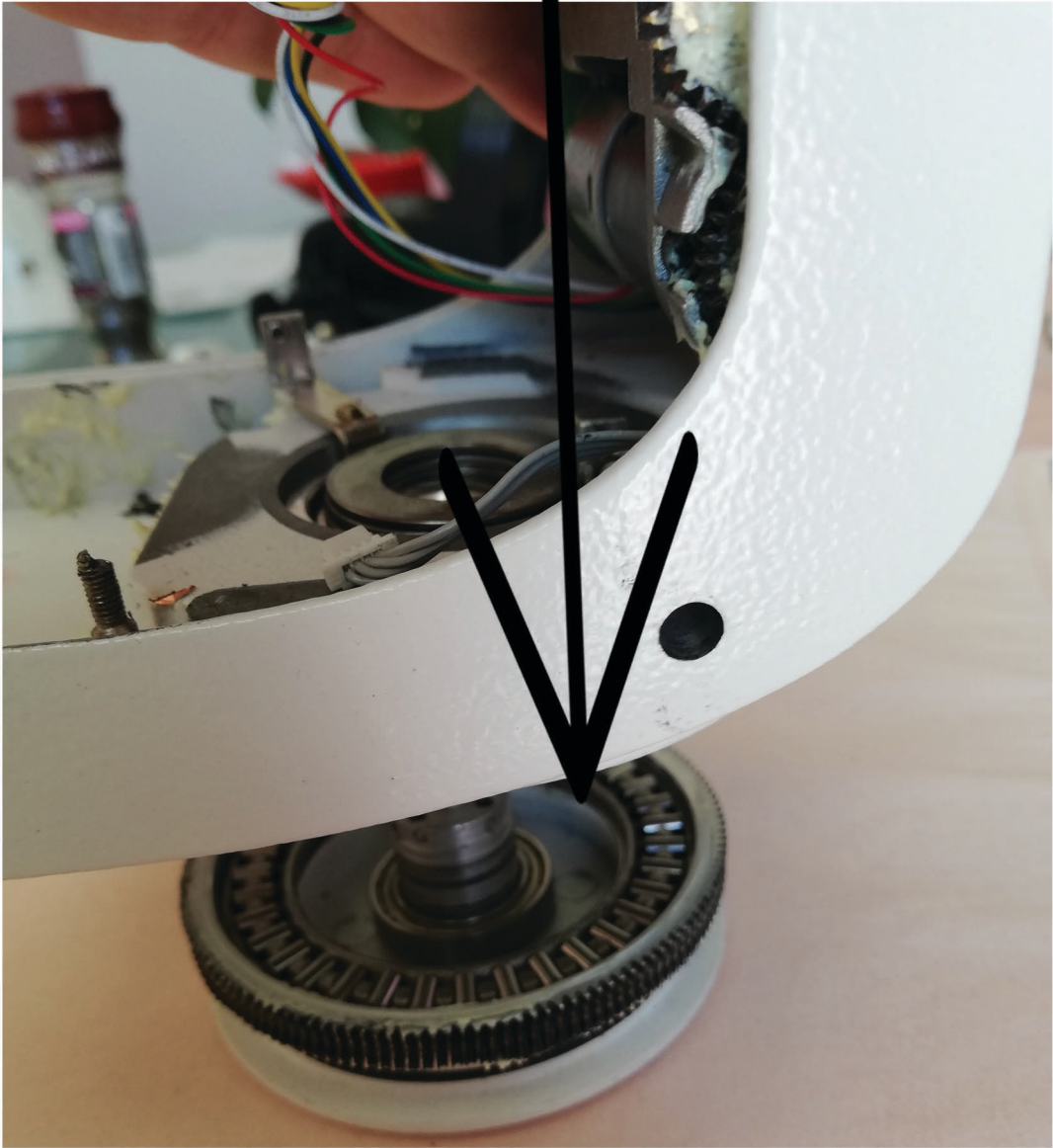
Remove the collar nut by unscrew two tiny allen screws at both sides of the collar. After that untight the collar. If you cant do by hand, try to unscrew carefully from two top holes with a small pliers



One of the tiny allen screw



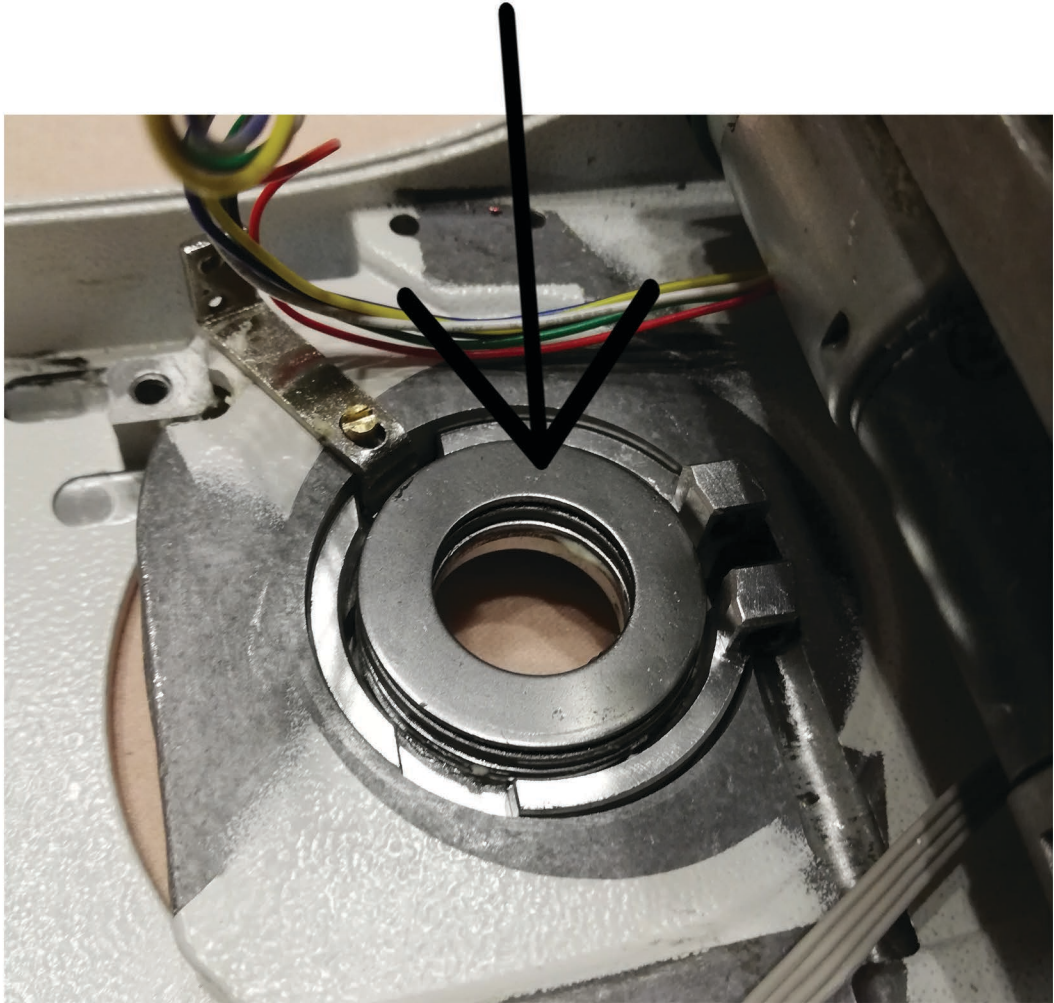
Remove AZ gear. Careful not to drop



Careful not to lose



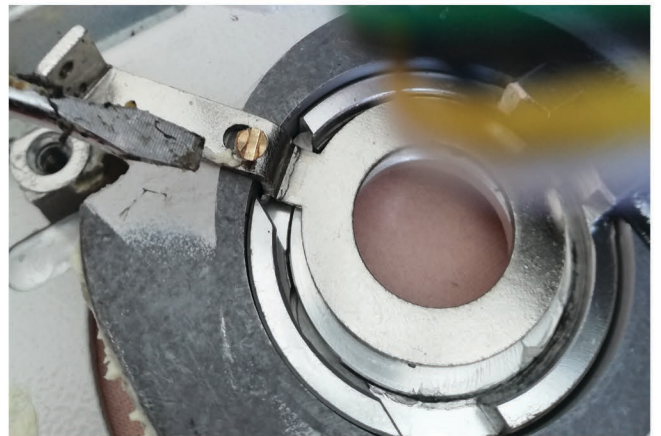
Remove the collars. Remember the order



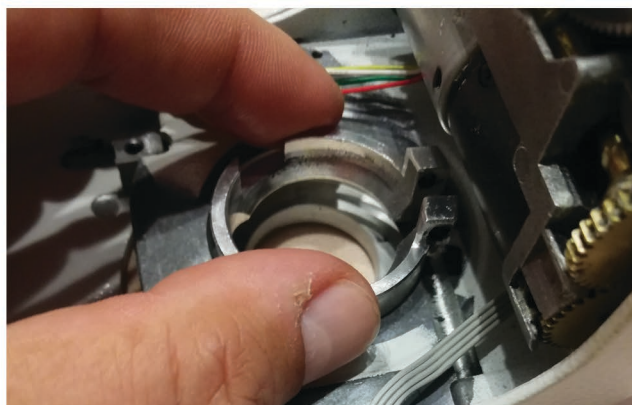
1



2



3



Complete and good luck!!

